

# Active@ Password Changer

## User Guide

Copyright © 1999-2014, LSOFTECHNOLOGIES INC. All rights reserved. No part of this documentation may be reproduced in any form or by any means or used to make any derivative work (such as translation, transformation, or adaptation) without written permission from LSOFTECHNOLOGIES INC.

LSOFTECHNOLOGIES INC. reserves the right to revise this documentation and to make changes in content from time to time without obligation on the part of LSOFTECHNOLOGIES INC. to provide notification of such revision or change.

LSOFTECHNOLOGIES INC. provides this documentation without warranty of any kind, either implied or expressed, including, but not limited to, the implied warranties of merchantability and fitness for a particular purpose. LSOFTECHNOLOGIES INC. may make improvements or changes in the product(s) and/or the program(s) described in this documentation at any time.

All technical data and computer software is commercial in nature and developed solely at private expense. As the User, or Installer/Administrator of this software, you agree not to remove or deface any portion of any legend provided on any licensed program or documentation contained in, or delivered to you in conjunction with, this User Guide.

Active@ Password Changer, the Active@ Password Changer logo and Active@ Password Changer Software are trademarks of LSOFTECHNOLOGIES INC.

The LSOFTECHNOLOGIES.NET logo is a trademark of LSOFTECHNOLOGIES INC.

Other brand and product names may be registered trademarks or trademarks of their respective holders.

# Contents

1 Product Overview.....	4
2 Operating Procedures.....	5
2.1 Program Start and Search Options .....	5
2.2 SAM Selection.....	7
2.3 Local User Account Selection .....	10
2.4 Change Account's Password and Attributes.....	11
3 Knowledge Base .....	14
3.1 Sales Questions.....	14
3.2 Technical Questions .....	15

# 1 Product Overview

Active@ Password Changer is a solution designed for resetting local user password and account attributes on Windows NT / 2000 / XP / Vista / 2003 / 2008 / 2012 / Windows 7 and Windows 8 systems in case of Administrator's password is forgotten, lost or user account has been blocked, disabled or locked out. You do not need to re-install and re-configure operating system in this case. With Active@ Password Changer you can log in as a particular user with an empty password.

Active@ Password Changer also provides the ability to manage with days and times of the week that the user account is permitted to log on to the computer, which is useful for preventing the logging on for account you choose (or remove that kind of prohibition). For example, you can define in what hours your child can logon to the computer. This software has simple wizard-like user interface, supports multiple hard disk drives, is able to detect several SAM databases (in case if multiple OS were installed on one volume) and pick up the right one before starting recovery process. List of local users is displayed; you should choose the one to reset password or parameters. It can reset User is Disabled flag, Account is locked out flag, User must change password flag and sets Password never expires to avoid possible user blocking after password has been reset.

Demo version allows you to detect proper SAM database, view the user list and particular user attributes.

Professional version actually resets passwords and changes attributes. FAT16 / FAT32 / NTFS / NTFS5 file systems are supported. Windows NT / 2000 / XP / Vista / 2003 / 2008 / 2012 / Windows 7 and Windows 8 operating systems are supported for password recovery, new 64-bit MS Windows operational systems are supported as well.

## 2 Operating Procedures

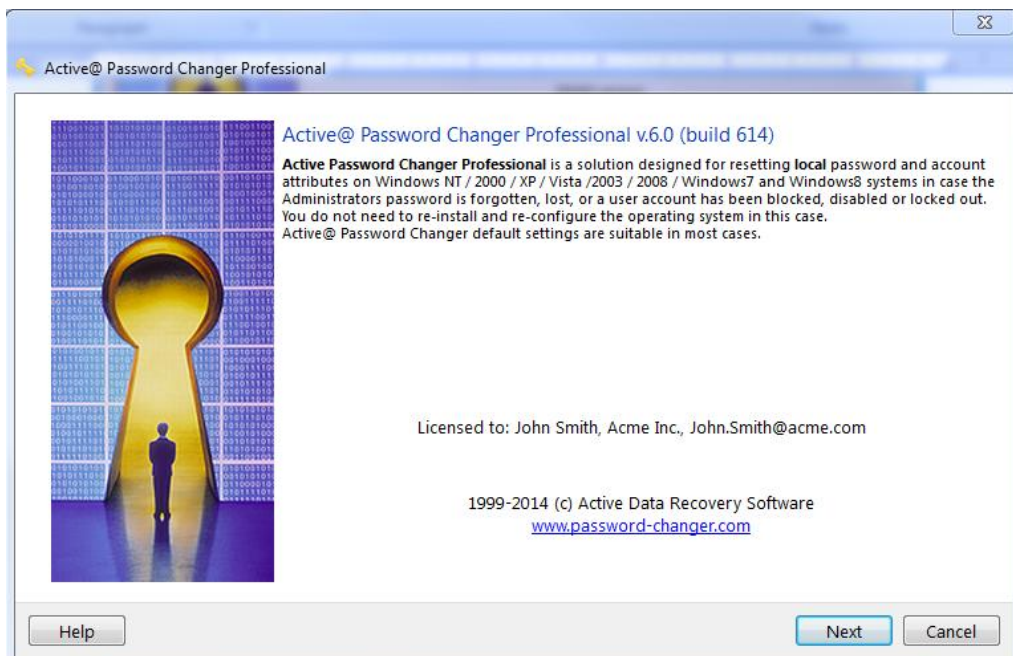
### 2.1 Program Start and Search Options

Start Active@ Password Changer:

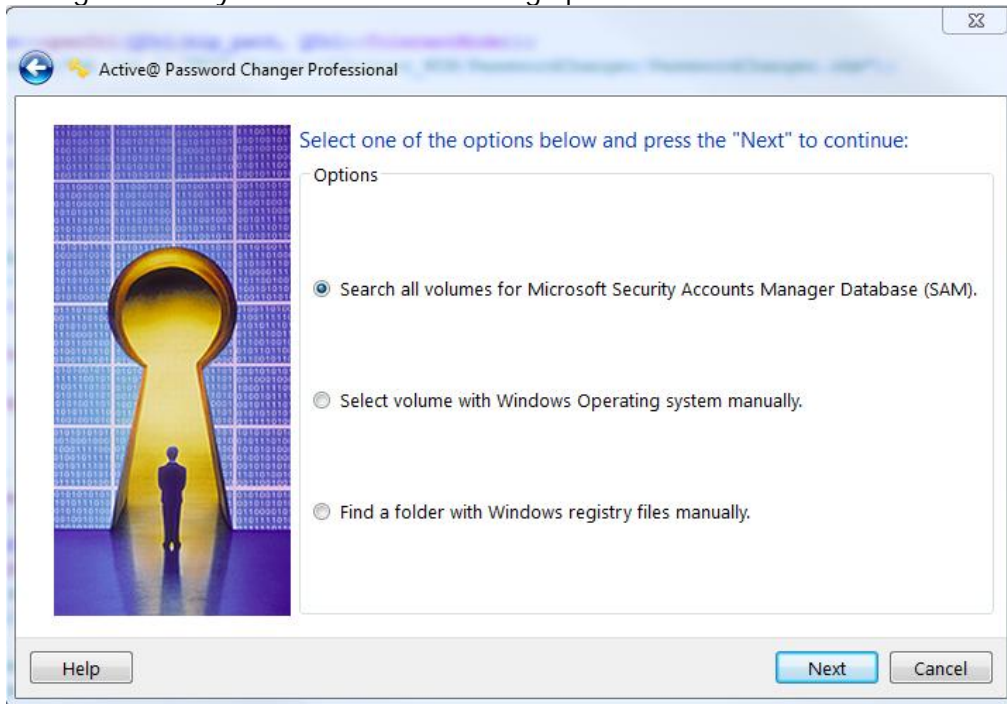
- from the Start menu
- from the command line:
  - Windows: go to the directory where software is located and type:  
> PasswordChanger.exe
  - Linux: go to the directory where software is located and type:  
> sudo ./PasswordChanger

In Linux software must be launched under Super User account

Welcome screen appears:



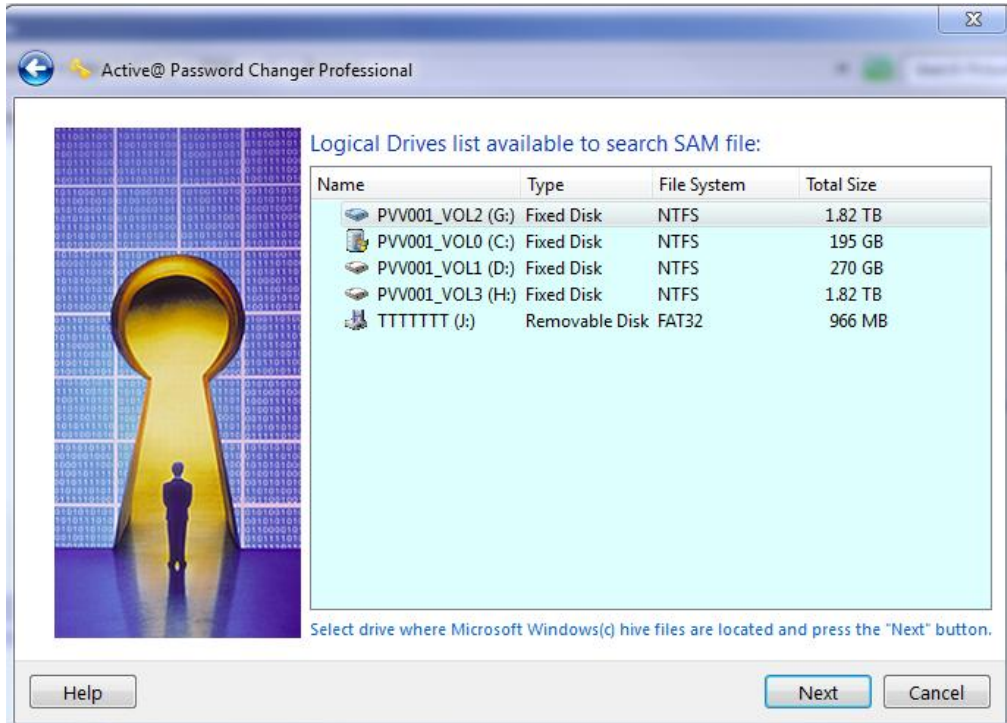
Program starts and you can read short explanations, on the next page of the Password Changer wizard you will see the following options:



You can either choose a particular logical drive to search SAM database on, or choose to search on all hard disks and logical drives. If it is impossible to reach a Windows system drive directly you can copy SAM hive file from "C:/Windows/System32/Config" folder to a flash drive (or other external drive), then attach this drive to you computer and reset the password in this SAM file with the third option.

Click Next to go to the next step.

If you choose the second option, you need to specify the drive to search SAM database on:

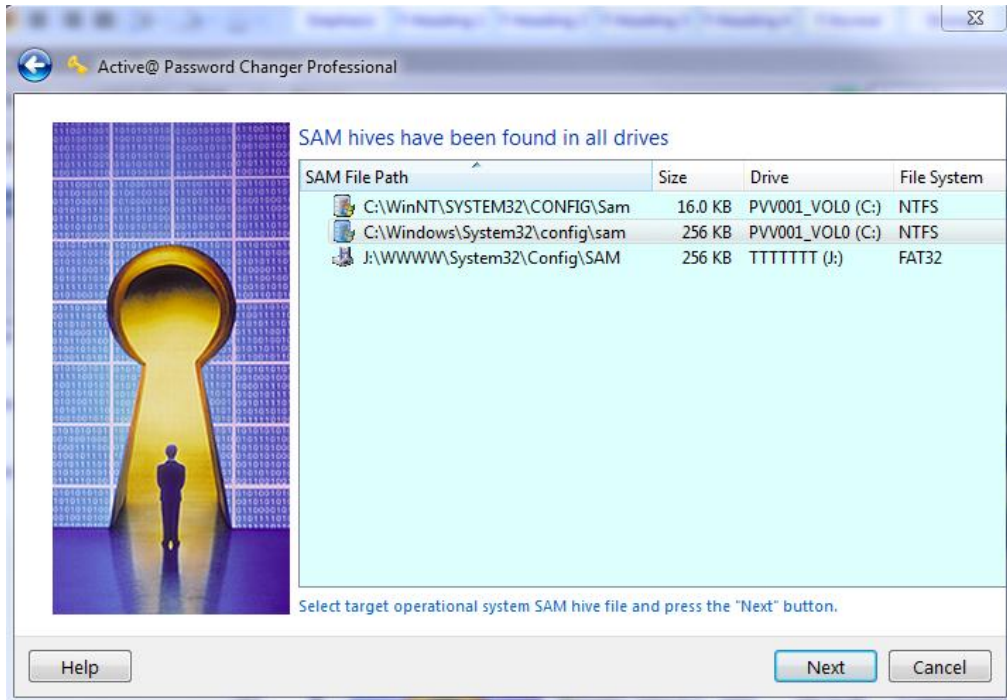


Choose a drive and click Next to go to the next step.

## 2.2 SAM Selection

SAM (Security Access Manager) - a database where information about local users, their rights and passwords is stored.

If several SAM databases found - you need to choose a proper SAM database to reset proper account password and attributes. Normally SAM is located on a drive where operating system is installed in the folder : \WINDOWS\SYSTEM32\CONFIG.

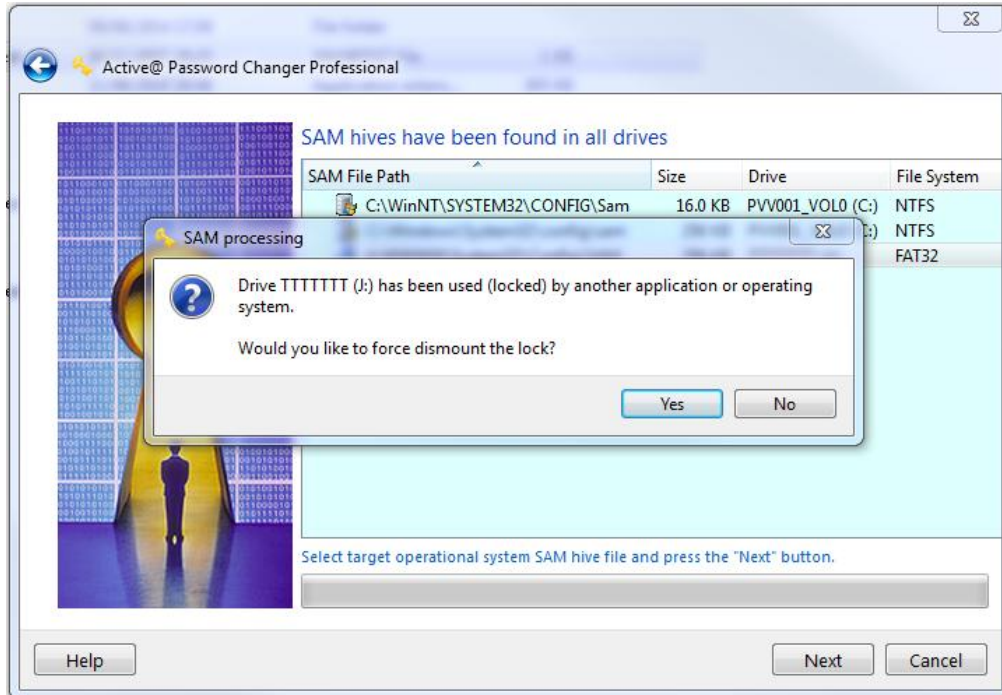


Note: Please do NOT try to change account attributes for the operating system currently running (which SAM is located on the same drive from where the Windows is started). It is not possible, see the note below. To change account attributes and reset the password you either need to boot from bootable CD containing Windows PE, or attach another HDD having Windows installed and boot from there.

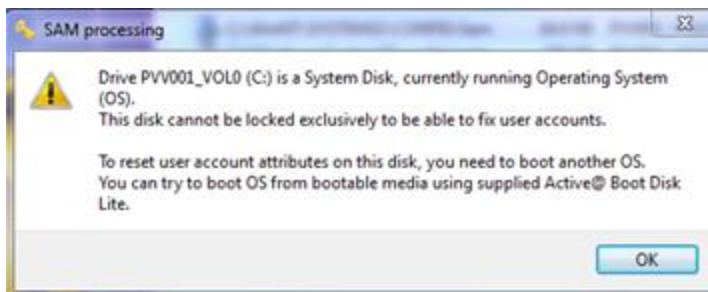
### Important

As long as you need to change system account attributes, drive where SAM is found must be locked exclusively before changing. Exclusive lock means that no one (including Windows) except Active@ Password Changer has full access to the account. This also means that if you try to change local account attributes for the system currently running, you will NOT be granted exclusive access to the drive and will not be able to reset account attributes. The following messages might appear:



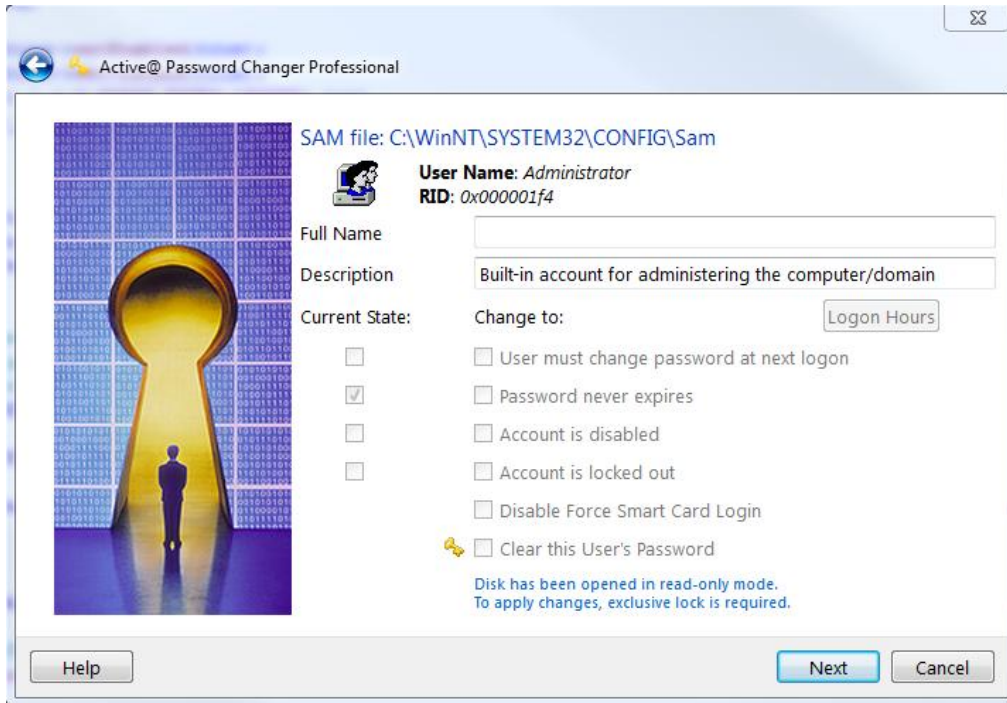


OR



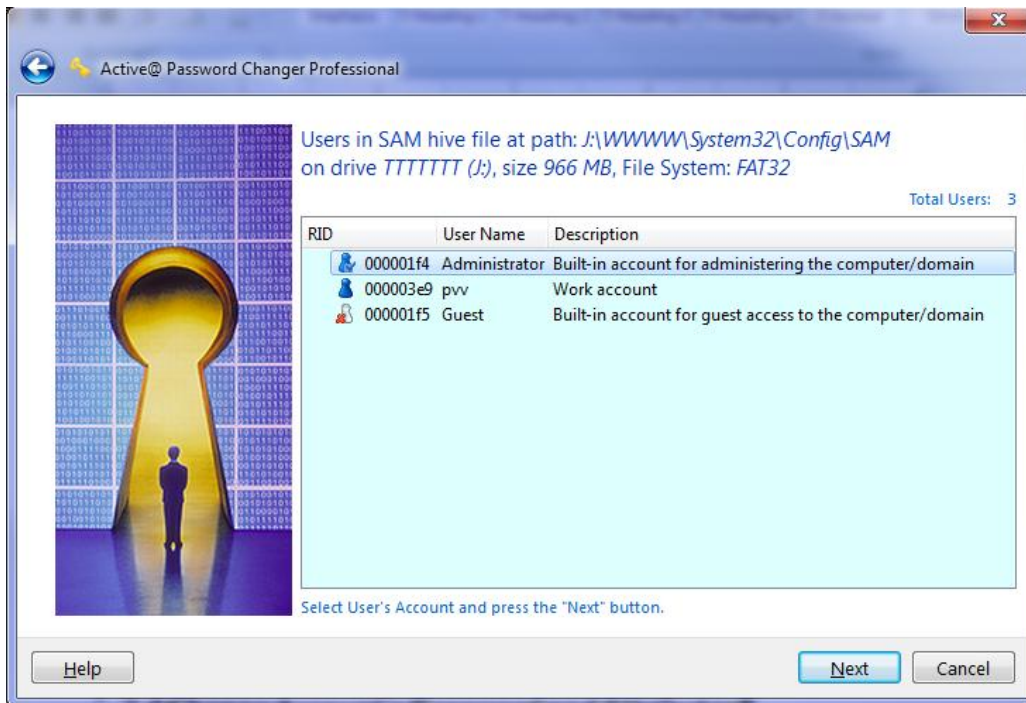
If selected drive cannot be unlocked by some reasons, current system drive is used by operating system, for example, User Account parameters will be opened in Read Only mode.

## 2 Operating Procedures



### 2.3 Local User Account Selection

After you've chosen SAM database you will see the list of local user accounts with descriptions:



Choose a Local User Account to reset password and attributes for and click Next to go to the next step.



Note: Primary Administrator's account (even if renamed) is always placed on the first place.

Other Administrator accounts are marked with a blue icon.  
Non-Administrator accounts (Users, Power Users, Guests, etc...) are marked with a white icon.

Disabled/Locked accounts are marked with a red cross.

## 2.4 Change Account's Password and Attributes

After you've chosen the Local User Account you will see account description and attributes:

The screenshot shows the 'Active@ Password Changer Professional' window. The title bar includes a back arrow, a yellow key icon, and the text 'Active@ Password Changer Professional'. The main content area is divided into two columns. The left column features a background image of a person standing in a doorway, with a grid of binary code (0s and 1s) overlaid. The right column contains the following information and controls:

- SAM file:** J:\WWW\System32\Config\SAM
- User Name:** Administrator
- RID:** 0x000001f4
- Full Name:** (empty text box)
- Description:** Built-in account for administering the computer/domain
- Current State:** Change to: Logon Hours
- User must change password at next logon
- Password never expires
- Account is disabled
- Account is locked out
- Disable Force Smart Card Login
- Clear this User's Password

At the bottom of the window, there are three buttons: 'Help', 'Apply', and 'Cancel'.

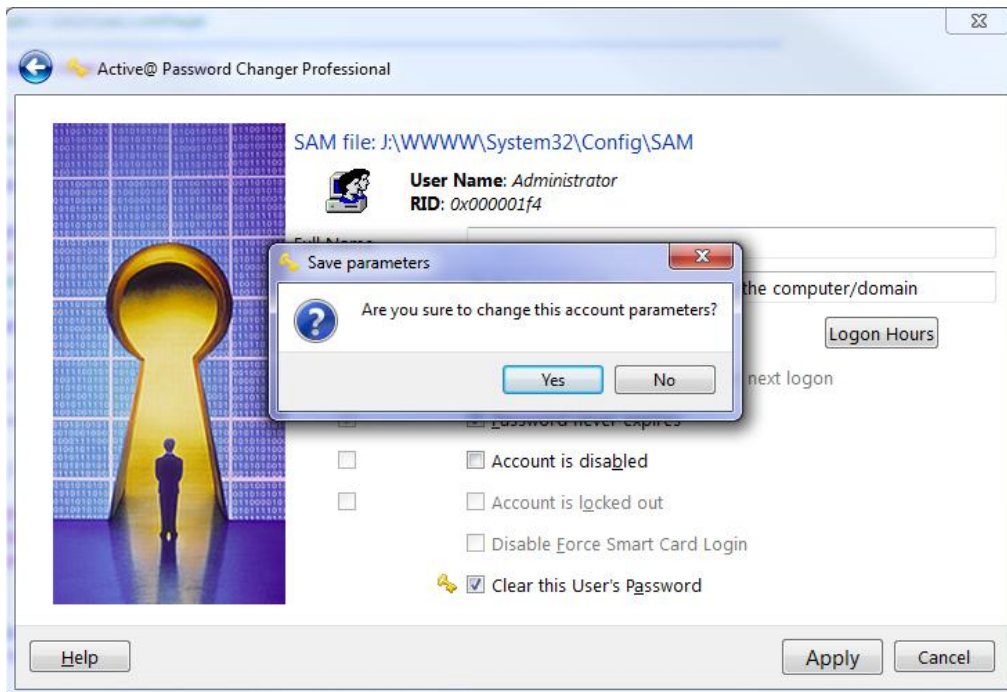
In the left column you can see the account's current existing attributes.

In the right column you can set new values for these attributes. Default values are acceptable for most cases and guarantee to be able to logon to the system without password.

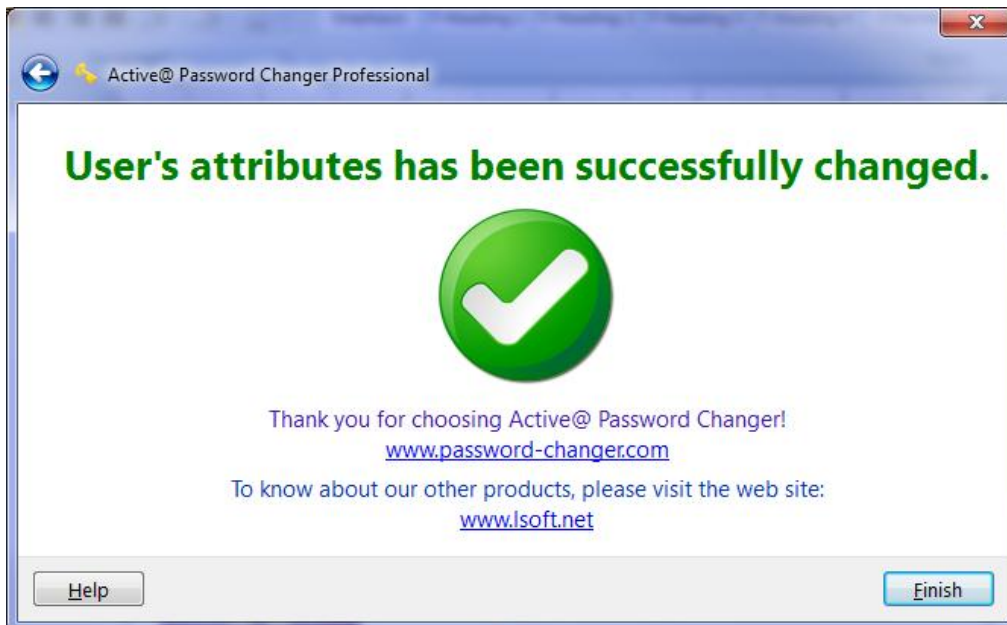
To reset Account's password - make sure that Clear this User's Password option is selected.

## 2 Operating Procedures

Click **Apply** to store changes back to the SAM database. You'll be asked for action confirmation:



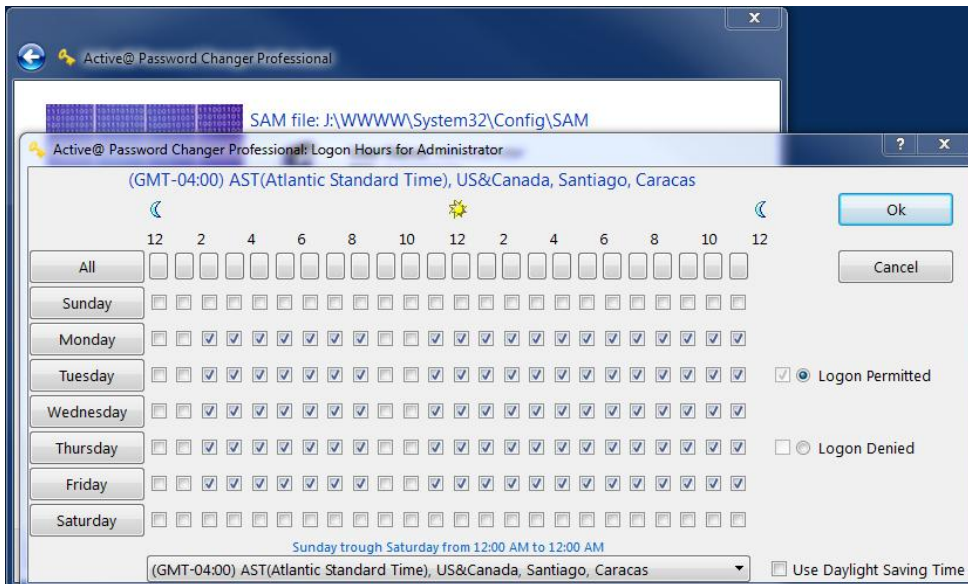
Click **Yes** to change the SAM file and go to final wizard page:



Click **Finish** to finish the Wizard and exit the program.



Note: If Logon Hours limitations exist for the particular account you'll see the Logon Hours button and would be able to change the Logon Hours limitations.



Specify logon hours, click OK to close the dialog and Save account's attributes.

## 3 Knowledge Base

### 3.1 Sales Questions

How to buy your products without a credit card? What are the payments terms?

The preferred method to order for our software is through online ordering using a credit card. Using this way you can download the software instantly without any delays saving you much precious time. Software download link is sent via email.

If you wish to pay without a credit card you can send us a Bank Money Order, Certified Cheque, PO (on orders of 500\$ US or more), Bank Money Transfer along with the completed order form which you can download by clicking the link below:

[www.password-changer.com/downloads/OrderForm.pdf](http://www.password-changer.com/downloads/OrderForm.pdf)

Usually it takes up to 10 business days to complete your order offline using this method.

For additional information click here:

[www.password-changer.com/orderfax.htm](http://www.password-changer.com/orderfax.htm)

How is your product delivered?

All our password recovery products are delivered electronically online only. So there are no shipping charges. After order completion the invoice and software download instructions are sent to the email address provided during the registration process within a few minutes of registering. After payment, the software can be immediately download via our Web-store.

Is there a way to re-download the purchased copy of Active@ Password Changer and install it again?

You can download your licensed software again, at anytime using our Clients Center free of charge: <https://secure.lsoft.net/clients/>

## What do I need to do to get the latest software updates for Active@ Password Changer?

You can get latest software updates for Active@ Password Changer from our Clients Center by clicking the following link: <https://secure.isoftware.net/clients/>

All upgrades are free within 90 days after purchase.

### 3.2 Technical Questions

I've reset local Administrator's password, but after re-boot on Welcome Screen I do not see user Administrator, just list of regular users. I have Windows XP. How can I log in as Administrator?

Operating System Windows XP (Home and Professional Editions) when booting suggests only names of regular users on Welcome Screen by default. Administrator's account is hidden. Press key combination Ctrl+Alt+Del two times to display Login Dialog Window and you will be able to type both user name and password. Type Administrator and use empty password.

I'm unable to find user Administrator in the list of the users after selection of proper SAM database in Active@ Password Changer. Where it is?

Most likely local account Administrator has been renamed due to security reasons. Active@ Password Changer always displays built-in Administrator's account on top (even it was renamed). Write down this account name to be able to type it in later on, after its password has been reset.

Will the User Profile be saved, after user's password has been reset?

User Profile depends on User Name and Security ID (SID) so it can not be spoiled by changing the user's password.

Will the file restrictions be saved, after user's password has been reset?

File and folder security settings are based on User Security ID (SID) that is produced during user account creation and does not depend on user password. You can change your password as often as you wish without files/folders security settings changes.

Can Password Changer help me in meeting the complexity requirements (such as digits, small and capital letters, and length of password) set by the PC's Local Security policy?

Local Security Account Policy affects the new passwords setting process in Windows environment, but not existing passwords, even absolutely empty ones. So you can reset the password for this account with Active@ Password Changer then logon with this user account name with the empty password.

I have erased the password using Active@ Password Changer on a system where the administrator is no longer with the company. The system is a NON ENGLISH (localized) version of Windows 2000. The Password Changer gave a message saying that the password was changed, but system is still asking me to type the password ("Wrong username or password").

It is possible that the Administrator account in your localized version is renamed (for example Administrateur in French version), or has national (non English) symbols. Try to start Active@ Password Changer and find out the real username for Administrator account. It has to be first in the user's list with RID = 000001f4. Write down this username and use it for login.